



## **SUPER** **Solar Float**

# WHY CHOOSE SUPER SOLAR ~~FLOAT~~

BARODA POLYFORM PVT. LTD. is a distinguished leader in the rotomoulding industry, boasting over 30 years of experience. Renowned for our expertise, we specialize in manufacturing high-quality marine application products, leveraging advanced technical know-how from our esteemed Australian partners. Committed to innovation and excellence, we continuously seek opportunities to enhance our offerings. We are excited to introduce our latest product, the SUPER SOLAR FLOAT, a testament to our dedication to leading the market with cutting-edge solutions.

## THE USP's

- » Environmental Stress Crack Resistant Material
- » Designed for Long Life
- » Low cost of Maintenance due to fewer joints
- » Increased efficiency of the panel due to the cooling power of water
- » Less evaporation of water
- » Floats can be filled with Polyurethane foam if required.
- » Highly flexible rubber grommets at all joints.
- » One float mounts 2 panels
- » In-built cable management system in our float design



WEATHERPROOF



NON-FADING  
COLOURS



UV STABLE  
POLYETHYLENE



100%  
RECYCLABLE



EASY  
TO CLEAN



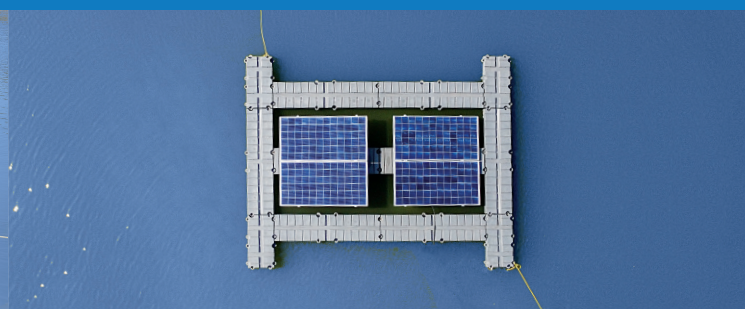
LIGHT  
WEIGHT



ROTATIONALLY MOULDED  
USING SOLAR ENERGY



ANTI-SKID  
SURFACE





# KEY FEATURES

The **SUPER SOLAR FLOAT SYSTEM** is made from rotomoulded polyethylene, which is durable, UV-stabilized, tough, and slip-resistant. This material can be configured into a variety of shapes and applications. It serves as the primary building block of Super Solar Float Systems and features high environmental stress crack resistance (ESCR).

Material:	HDPE - Float can be filled with Polyurethane foam, if required
Size:	Length - 2.4m Width - 0.6m Height - 0.2m
Walkway:	Length - 1.2m Width - 0.6m Height - 0.2m
Bouyancy:	100KG
Color:	Grey
Deck & Walkway:	Slip Resistant, Raised tile platform, Self-Draining
Resistance to Degradation:	Extremely High, UV Stable
Cable System:	In-built cable management system
Float:	<ul style="list-style-type: none"> <li>• Each float mounts 2 panels</li> <li>• Float is designed to mount new generation solar panels.</li> <li>• Each float has in built mount system</li> </ul>
Installation:	<ul style="list-style-type: none"> <li>• Easy to install &amp; dismantle</li> <li>• Highly flexible rubber grommets at all joints</li> <li>• In-built anchoring with FE analysis at bouyancy pillows</li> </ul>

# OUR OFFERINGS



Cable Floats

Floating  
Walk-ways  
Access-ways



Management  
Work-Boats

Floating  
platforms for  
Inverters &  
Transformers

